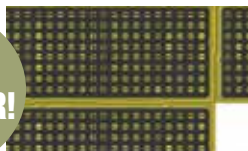


NESTABLE 2-DRUM POLY-SPILLPALLET™ TO NEST IS BEST



Maximize space by minimizing storage! Capture drips and spills within the Nestable 2-Drum Poly-Spillpallet™ sump. The 21" height design and 2,000 lb. load capacity keep your drums within easy reach at a secure level. The unit provides chemical, UV, rust and corrosion resistance while the textured removable grate keeps drums from sliding and provides unrestricted and hassle-free sump. Optional drain available.

LINK TOGETHER!



Store multiple Poly-pallets in a minimal amount of space with a 4" nest height! Links together for customization and security.

SHIP 3X MORE!



*Patents Pending

NESTABLE 2-DRUM POLY-SPILLPALLET

Part #	Description	Ext. Dimensions L x W x H in. (cm)	Weight lb. (kg)	Spill Cap. gal. (L)	Load Cap. lb. (kg)
5222-YE	2-Drum	51 x 26 x 21 (130 x 66 x 53)	54 (24.5)	66 (249.8)	2,000 (907)
5222-YE-D	(w/Drain)				

Regulations: EPA 40 CFR 264.175, SPCC, UFC and NPDES



2-DRUM POLY-SPILLPALLET™ 2000

This secondary containment system is engineered to meet the rigors of today's regulatory environment. Made with 100% polyethylene, it provides excellent chemical resistance. Optional drain with plug.

- Meets EPA 40 CFR 264.175
- 2,000 lb. Handling Capacity
- Forkliftable
- Removable grate for easy cleaning

Optional tarp available (Part # 5253-TARP, p. 13)

2-DRUM POLY-SPILLPALLET™ 2000

Part #	Description	Dimensions L x W x H in. (cm)	Weight lb. (kg)	Spill Cap. gal. (L)	Load Cap. lb. (kg)
5253-YE	2-Drum	53.5 x 29 x 17 (136 x 74 x 43)	57 (25.9)	58 (219.5)	2,000 (907)
5253-YE-D	(w/drain)				

Regulations: EPA 40 CFR 264.175, SPCC and NPDES

LOW-PROFILE IN-LINE POLY-SPILLPALLET™ 3000 WHERE NO DRUM STORAGE HAS GONE BEFORE.

Store drums in-line along a wall, between columns, and in all those spaces once thought to be unusable. Optional drain.

- Holds four (4) 55-gallon drums
- Low 12" profile
- 3,000 lb Handling Capacity
- Raised edge on back and sides helps orient barrels on pallet
- Non-skid, removable grates
- 66-gallon sump capacity meets EPA 40 CFR 264.175
- 100% polyethylene

Optional tarp available (Part # 5102-TARP, p. 13)



IN-LINE POLY-SPILLPALLET™ 3000

Part #	Description	Dimensions L x W x H in. (cm)	Weight lb. (kg)	Spill Cap. gal. (L)	Load Cap. lb. (kg)
5102-YE	4-Drum	98 x 25.25 x 12 (249 x 64 x 30)	78 (35.4)	66 (249.8)	3,000 (1,361)
5102-YE-D	(w/drain)				

Regulations: EPA 40 CFR 264.175, SPCC, NPDES and UFC

DID YOU KNOW?

Many establishments are required by government standards to have a 'Spill Plan' to help prevent toxic and hazardous materials from damaging the environment.